

Location Map NOT TO SCALE



Completed Projects

- VCC Vantage-9
- Vision Galleria
- VCC Virage
- Shubhashree Woods
- Shubham Park
- Shubham Complex

Ongoing Projects

- Vantagio
- Shubham Galleria
- S3 Lifestyle
- Florencia

Upcoming Projects

- Residential Project in Punawale
- Residential Project in Pimple Nilakh
- Commercial Project in Wakad



Office Add.: Ajay Apartment, D. P. Road, Aundh, Pune- 411 007.

Site: VCC Vaiga, Near Aditya Birla Hospital, Morya Ganpati Mandir Road, Chinchwad, Pune: 411 033.

Call: 866 981 1899 (W) www.vcc.co.in (E) info@vcc.co.in

Note : The Plans, Specifications, Amenities, Number of flats, Number of floors, Area & Photographs in the brochure are only indicative & are subject to change without any prior notice. The rights of certain changes are reserved by the developers.



RERA Reg. No.
P52100022419
<https://maharera.mahaonline.gov.in>

Pravin Gursale | 9822076168



a purely residential project at Heart of Chinchwad

Life at your doorstep

Today, everyone seeks everything close to their home. But there's a huge difference in living close to convenience and living close to chaos. So, how about an address that gives you everything you need close by, without disturbing your privacy? Well, it's possible and it's in your reach.

Welcome to Vaiga at a central location in Chinchwad, where life is at your doorstep. Here's an address made of residences only, because everything else is just a walk away.



Comfort at your doorstep

Crafted by VCC, a reputed name in the real estate segment, Vaiga ensures that homes have space for everything you need- smiles, privacy and togetherness.

Offering 2 and 3 RHK Homes in an elegant tower, it offers all these things and more.

The proximity to Pavana River ensures a soothing neighbourhood in the heart of Chinchwad.



3 RHK Flat
Sectional View
Artist's Imagination



2 RHK Flat
Sectional View
Artist's Imagination

ENTRANCE

Lifestyle at your doorstep

A fabulous location is the biggest delight you can gift your loved ones. Because then, they can access a lifestyle of their choice, without any challenges.

Vaiga, standing tall at a great location in Chinchwad, brings this lifestyle to the doorstep of your loved ones.



Near by Morya Gosavi Temple



Near by Proposed Metro Station



Near by Aditya Birla Hospital

- Morya Gosavi Ganpati Mandir 350 mts.
- PCMC Garden 150 mts.
- Chaphekar Chowk 700 mts.
- Aditya Brila Hospital 500 mts.
- Lokmanya Hospital 2 Km.
- Schools 1.5 Km.
- Old Mumbai- Pune Highway 2 Km.
- Proposed Metro Station 1.5 Km.



Features of the project

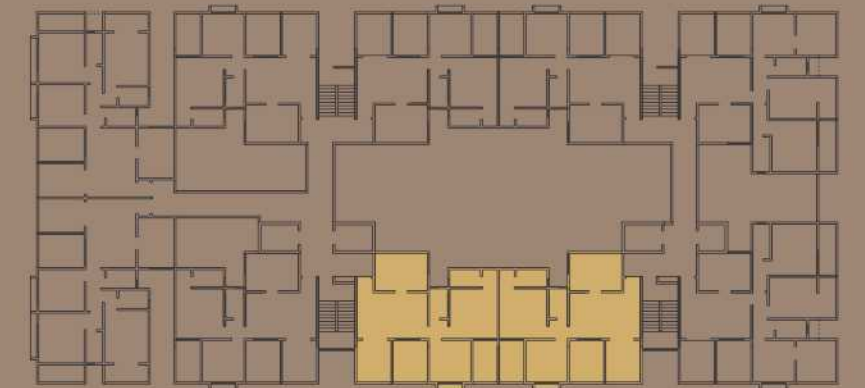
- Terrace garden, Children play area, Gazebo, Yoga, Open play area & Society office.
- Elegant elevation.
- Elegant main entrance gate with security cabin.
- 24x7 security.
- Decorative entrance lobby.
- 4 branded automatic lifts with power back-up.
- Power back-up for lift, pump, parking & common area.
- Rain water harvesting system.
- Video door phone.
- CCTV camera in selected area.
- Energy efficient LED lighting in common areas.
- Fire fighting system for the building.
- Common toilet in parking.
- Smooth internal Paved/ Tremix driveways.
- Letter box and name plate for each flat.
- Greenery plantation.
- Well illuminated internal driveways & parking.
- Automatic water level controller for UGWT & OHWT.

Specifications of the project

- STRUCTURE**
 - Earthquake resistant R.C.C. frame structure.
- MASONRY**
 - External & internal walls in ACC blocks.
- PLASTER**
 - External sand faced with texture finish plaster & internal gypsum finish.
- FLOORING**
 - 32"x32" branded Vitrified tile with skirting for all rooms.
 - Anti-skid ceramic flooring for toilet & attached terrace.
- WINDOWS**
 - U-PVC sliding windows with mosquito net.
 - M. S. safety grill.
 - Granite window sill.
- DOORS**
 - Decorative Main door with night latch & branded fittings.
 - Laminated internal flush doors with branded cylindrical lock.
 - UPVC sliding doors with mosquito net for attached terraces.
- PAINTING**
 - Superior Luster paint for internal walls.
 - Acrylic emulsion paint for external walls.



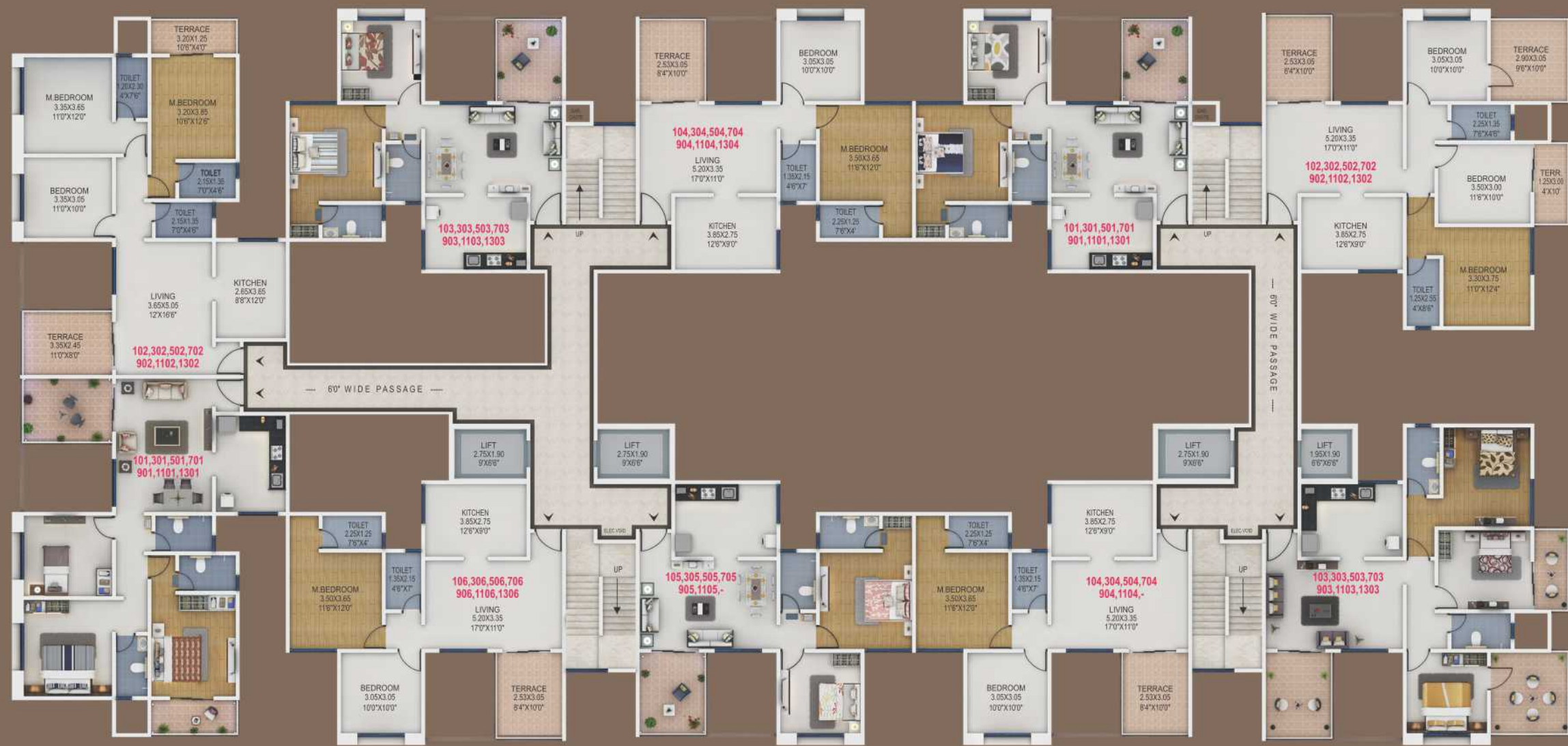
- KITCHEN**
 - Granite kitchen platform with S.S. sink.
 - Designer tile dado.
 - Provision for water purifier & exhaust fan.
 - Provision for washing machine.
- TOILET**
 - Designer tile dado up-to 7' height in toilet.
 - Concealed plumbing work.
 - Hot & cold diverter unit with overhead shower.
 - Branded C.P. fittings & sanitary ware.
 - Provision for geyser & exhaust fan.
- ELECTRICAL**
 - Branded concealed copper wiring with modular switches.
 - Provision for TV & Tel. point in living room.
 - Provision for AC point in M. bedroom.
 - Adequate electrical points with MCB.
 - Provision for AC outdoor unit.
 - Provision for Inverter.
- LIFT**
 - Branded 4 automatic lifts with power back-up.



Amenities on 13th floor plan

View

12.00 M. WIDE D.P. ROAD



WING- A

WING- B

Typical 1st, 3rd, 5th, 7th, 9th, 11th & 13th floor plan



12.00 M. WIDE D.P. ROAD



WING- A

WING- B

Typical 2nd, 4th, 6th, 8th, 10th & 12th floor plan

